

# Stagea (WGNC34) 260RS & 4WD Turbo MT / Suspension Link & Bush

## Suspension Link

No.	Part	Part no.	Code	Price with tax	Price	Qty per car	Part information
3	Tension Rod Set *1	54460-RS580	E	26,250	25,000	1	Left/right, one set
5	Rear A Arm Set	55550-RS590	E	31,500	30,000	1	Left/right, one set *2
7	Rear Upper Link Set, Front	55125-RS580	E	12,600	12,000	1	Left/right, one set
9	Rear Upper Link Set, Rear	55135-RS590	E	16,590	15,800	1	Left/right, one set

\* Shape and materials are the same as for standard parts. NISMO reinforced Bush inserted. Color: silver with NISMO logo sticker.

\*1 The standard brake air guide can not be installed. Because of the tension rod set (No.3) has no bracket for the installation. when installing, the clips (Genuine Nissan part 41184-24U00, four units) are required. Please purchase separately.

\*2 The A arm set does not come with a collar; please use the existing standard collar for installation.

### Repair parts (Bush) (need pressure fitting / Applicable to genuine link)

No.	Part	Part no.	Code	Price with tax	Price	Qty per car	Part information
4	Tension Rod Bush	54476-RS580	E	6,300	6,000	2	For 54460-RS580
6	Rear A Arm Bush	55045-RS590	E	2,100	2,000	4	For 55550-RS590
8	Rear Upper Link Bush	55157-RS580	E	1,890	1,800	2	For 55125-RS580
10	Rear Upper Link Bush	55157-RS580	E	1,890	1,800	2	For 55135-RS590

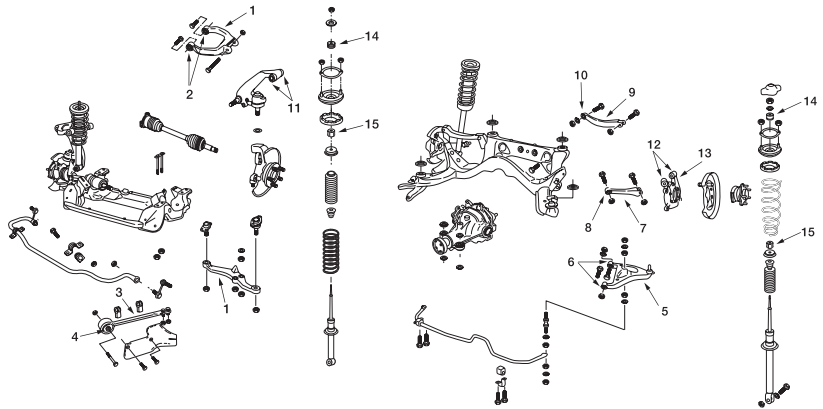
## Reinforced Bush

No.	Part	Part no.	Code	Price with tax	Price	Qty per car	Part information
11	Front Third Link Bush	54545-RS590	E	3,150	3,000	4	Need pressure fitting
12	Rear Axle Bush, Upper	55157-RS580	E	1,890	1,800	4	
13	Rear Shock Absorber Bush	56219-RS595	E	4,935	4,700	2	
14	Upper Mount Bush, Upper	56217-RS580	E	1,050	1,000	4	Front rear common
15	Upper Mount Bush, Lower	56218-RS580	E	1,050	1,000	4	

Apart from reinforced rubber bushings, all part designs and materials used are the same as standard. Illustration parts no.11~13 need pressure of bush fitting.

### Product Note

- Always replace both left and right link and bushings at the same time. If only one side is replaced, the left-right balance of the suspension is lost, so even when repairing the vehicle replace both sides.
- When replacing the rear link, the rear axle-side bushing (no. 12 and 13) it is recommended to replace with NISMO units at the same time. Replacing only the link will not draw out the full performance potential of the suspension.



· Collar is not included with A arm