

Stagea (WC34) 4WD AT / Suspension Link & Bush

Circuit Link

No.	Part	Part no.	Code	Price with tax	Price	Qty per car	Part information
1	Front Circuit Link Set, Right Side	54501-RS595-R	E	34,650	33,000	1	Right side, one set
	Front Circuit Link Set, Left Side	54502-RS595-R	E	34,650	33,000	1	Left side, one set

· Shape and materials are the same as for standard parts. Change of effective length on some links, and of position of installation holes. NISMO reinforced Bush inserted. Provides optimal geometry, improving cornering performance in circuit driving. Color: silver with NISMO logo sticker.

Repair parts (Bush) (need pressure fitting / Applicable to genuine link)

No.	Part	Part no.	Code	Price with tax	Price	Qty per car	Part information
2	Front Upper Link Bush	54541-RS590	E	2,625	2,500	4	For 54501-RS595-R For 54502-RS595-R

Set Contents

- Upper link
- Transverse link

Changes

- To provide optimal camber alignment, the transverse link's effective length has been extended (+4mm).
- The position of the third link installation hole has been changed.

· Change in alignment, on standard vehicle height (Designed value):

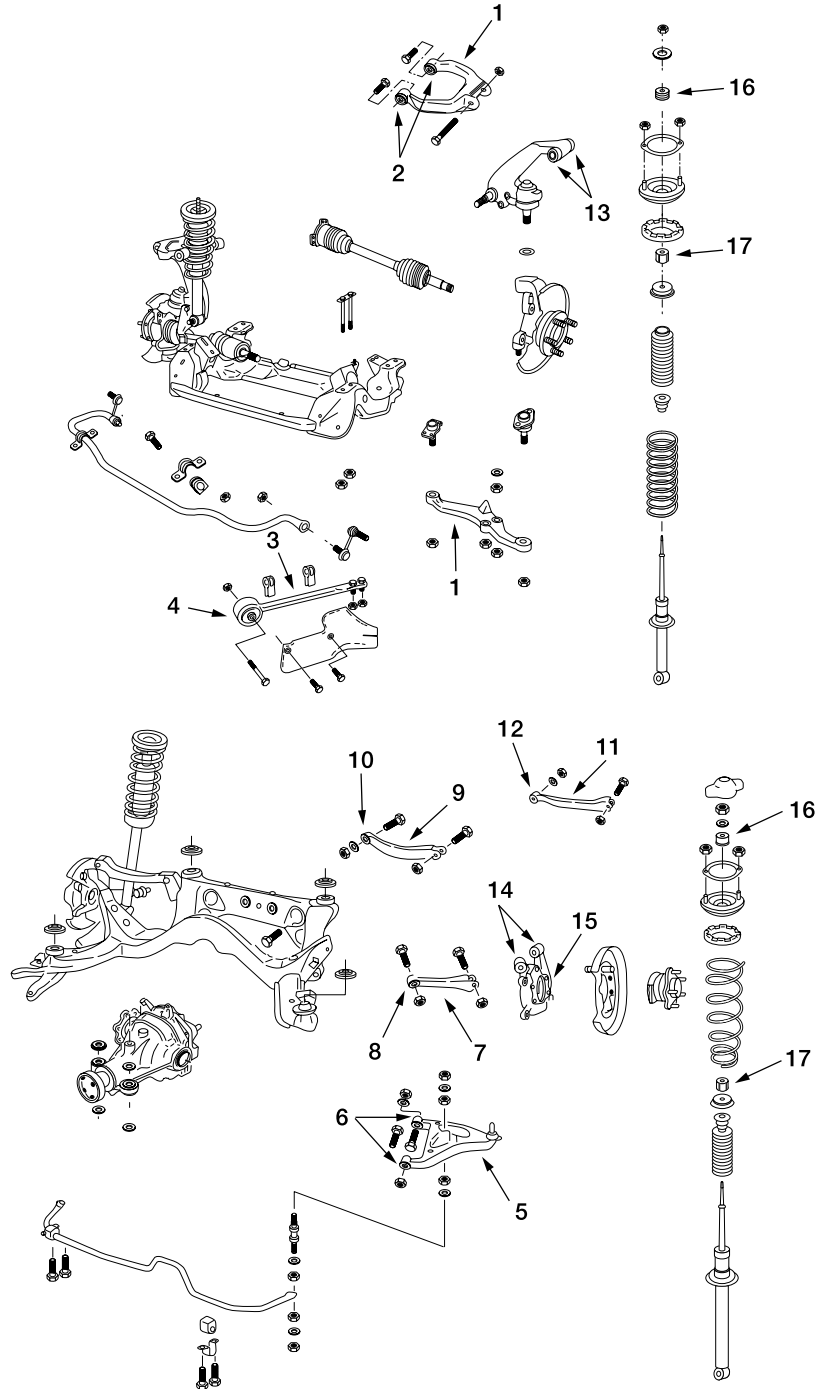
Before installation: -0° 50' → after installation: -1° 50'

*The figures above may vary by ± 0.45 , depending on individual vehicle characteristics.

Product Note

- When installing the Circuit Link Set, always change all left and right link at the same time. Replacing only one area will have a negative effect on suspension balance.
- We suggest that the tension rod set (no. 3 in illustration) and front third link Bush (no. 11) should both be replaced with NISMO parts. Replacing only the link will not draw out the full performance potential of the suspension.
- For repairs, replace all the upper link on one side at the same time, as well as the tension rod Bush and upper link on the opposite side as well. In the case of an accident, damage to one area is likely to place severe stress on all the link; replacing only one part of the link will negatively effect the balance of the suspension.

Stagea (WC34) 4WD AT / Suspension Link & Bush



Parts no. 11 and 15 are not required in HICAS-equipped vehicles