

# Stagea (WC34) 4WD AT / Suspension Link & Bush

## Suspension Link

No.	Part	Part no.	Code	Price with tax	Price	Qty per car	Part information
3	Tension Rod Set	54460-RS580	E	26,250	25,000	1	Left/right, one set *
5	Rear A Arm Set	55550-RS590	E	31,500	30,000	1	Left/right, one set
7	Rear Upper Link Set, Front	55125-RS580	E	11,550	11,000	1	Left/right, one set
9	Rear Upper Link Set, Rear	55135-RS590	E	16,590	15,800	1	Left/right, one set
11	Rear Lower Link Set	55100-RS590	E	15,750	15,000	1	Left/right, one set; not required in HICAS-equipped vehicles!

\* Shape (except for no. 3) and materials are the same as for standard parts. NISMO reinforced Bush inserted. Color: silver with NISMO logo sticker.

\*1 The standard brake air guide can not be installed. Because of the tension rod set (No.3) has no bracket for the installation. when installing, the clips (Genuine Nissan part 41184-24U00, four units) are required. Please purchase separately.

### Repair parts (Bush) (need pressure fitting / Applicable to genuine link)

No.	Part	Part no.	Code	Price with tax	Price	Qty per car	Part information
4	Tension Rod Bush	54476-RS580	E	6,300	6,000	2	For 54460-RS580
6	Rear A Arm Bush	55045-RS590	E	2,100	2,000	4	For 55550-RS590
8	Rear Upper Link Bush	55157-RS580	E	1,890	1,800	2	For 55125-RS580
10	Rear Upper Link Bush	55157-RS580	E	1,890	1,800	2	For 55135-RS590
12	Rear Lower Link Bush	55157-RS590	E	1,890	1,800	2	For 55100-RS590

\* Parts no. 8 and 10 are common

## Reinforced Bush

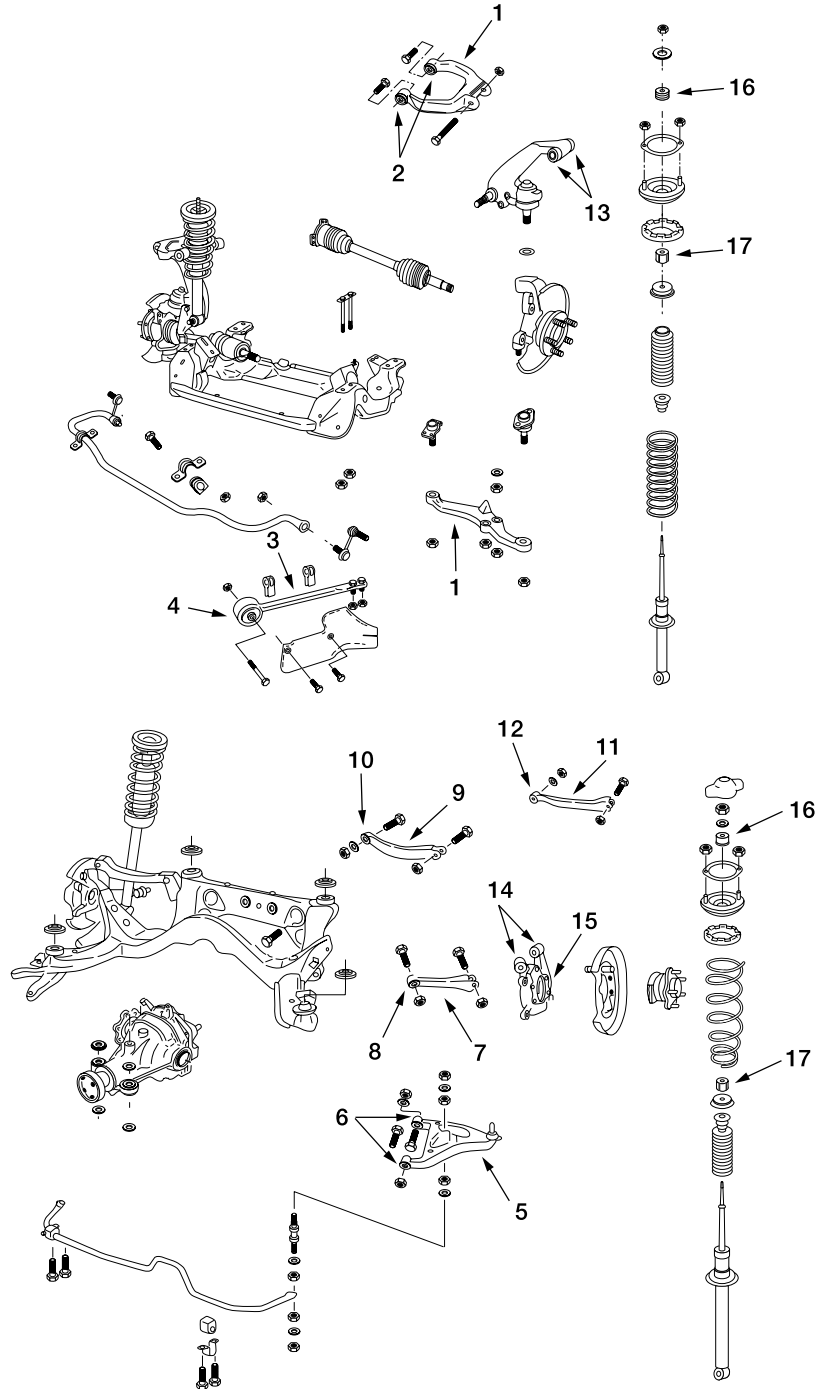
No.	Part	Part no.	Code	Price with tax	Price	Qty per car	Part information
13	Front Third Link Bush	54545-RS590	E	3,150	3,000	4	Need pressure fitting
14	Rear Axle Bush, Upper	55157-RS521	E	1,890	1,800	4	
15	Rear Axle Bush, Rear	55152-RS520	E	1,260	1,200	2	Not required on HICAS-equipped vehicles; need pressure fitting
16	Upper Mount Bush, Upper	56217-RS580	E	1,050	1,000	4	Front rear common
17	Upper Mount Bush, Lower	56218-RS580	E	1,050	1,000	4	

\* All part designs and materials are the same as standard parts hardened rubber. No 13 to 15 in illustration need pressure fitting.

### Product Note

- Always replace both left and right link and Bush at the same time. If only one side is replaced, the left-right balance of the suspension is lost, so even when repairing the vehicle replace both sides.
- When replacing the rear link, rear axle-side Bush (no. 14 and 15) it is recommended to replace with NISMO units at the same time. Replacing only the link will not draw out the full performance potential of the suspension.

# Stagea (WC34) 4WD AT / Suspension Link & Bush



Parts no. 11 and 15 are not required in HICAS-equipped vehicles