

# Silvia (S14, S15) / Suspension Link & Bush

## Suspension Link

No.	Part	Part no.	Code	Price with tax	Price	Qty per car	Part information
1	Tension Rod Set	54460-RSR40	E	27,300	26,000	1	Left/right, one set *1
3	Transverse Link Set	54555-RS541	E	30,450	29,000	1	Left/right, one set
5	Rear A Arm Set (standard)	55550-RS590	E	31,500	30,000	1	Left/right, one set
5	Rear A Arm Set (reinforced)	55550-RS591	E	36,750	35,000	1	Left/right, one set, Reinforced
7	Rear Upper Link Set, Front	55125-RS580	E	12,600	11,000	1	Left/right, one set
9	Rear Upper Link Set Pro., Rear	55135-RRR45	E	35,700	34,000	1	Left/right, one set; effective length extended *2
9	Rear Upper Link Set, Rear	55135-RS590	E	16,590	15,800	1	Left/right, one set
11	Rear Lower Link Set	55100-RS590	E	15,750	15,000	1	Left/right, one set Not needed for HICAS-equipped vehicles

\* Shape and materials are the same as for standard parts (except for no. 1 in illustration). NISMO reinforced Bush have been inserted. Color: silver with NISMO sticker.

\*1 The standard brake air guide can not be installed. Because of the tension rod set (No.1) has no bracket for the installation. when installing, the clips ( Genuine Nissan part 41184-24U00, four units) are required. Please purchase separately.

\*2 Installation is possible in only HICAS-equipped vehicles. When car is to be used on public roads, an application for modification is required (in Japan; local laws may vary). Clearance of tires, fenders, etc. will change after installation.

### Repair parts (Bush) (need pressure fitting / applicable to genuine link).

No.	Part	Part no.	Code	Price with tax	Price	Qty per car	Part information
2	Tension Rod Bush	54476-RS590	E	3,150	3,000	2	For 54460-RSR40
4	Transverse Link Bush	54560-RS590	E	3,150	3,000	2	For 54555-RS541
6	Rear A Arm Bush	55045-RS590	E	2,100	2,000	4	For 55550-RS590
8	Rear Upper Link Bush	55157-RS580	E	1,890	1,800	2	For 55125-RS580
10	Rear Upper Link Bush	55157-RS580	E	1,890	1,800	2	For 55135-RS590
12	Rear Lower Link Bush	55157-RS590	E	1,890	1,800	2	For 55100-RS590

\* Parts no. 8 and 10 are common parts.

## Reinforced Bush

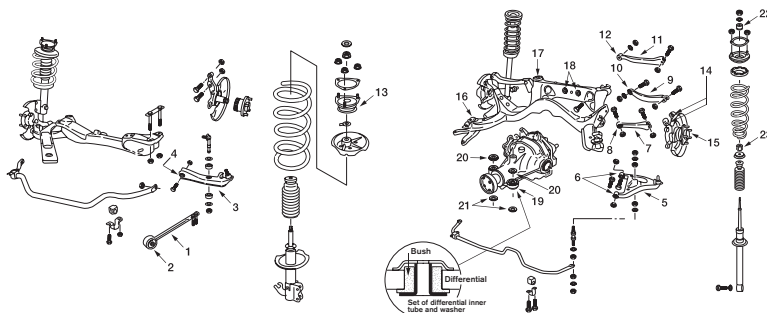
No.	Part	Part no.	Code	Price with tax	Price	Qty per car	Part information
13	Front Strut Upper Mount	54320-RS520	—	Dealt by Nissan	Dealt by Nissan	2	
14	Rear Axle Bush, Upper	55157-RS521	E	1,890	1,800	4	Needs pressure fitting
15	Rear Axle Bush, Rear	55157-RS580	E	1,890	1,800	2	Not needed for HICAS-equipped vehicles; needs pressure fitting
	Rear Suspension Mount Bush Kit	55400-RS590	E	19,950	19,000	1	Kit for one vehicle (no. 16, 17 in illustration)
	Diff Mount Bush Kit	55401-RS590	E	24,150	23,000	1	Kit for one vehicle (no. 18 to 21 in illustration)*
22	Upper Mount Bush, Upper	56217-RS580	E	1,050	1,000	2	
23	Upper Mount Bush, Lower	56218-RS580	E	1,050	1,000	2	

\* All part (except No.10~15) designs and materials are the same as standard parts hardened rubber. No 14 to 19 in illustration need pressure fitting.

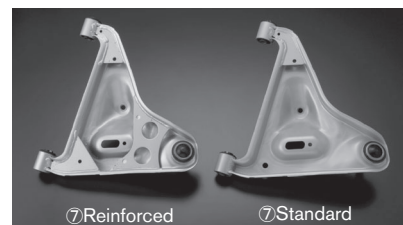
\* Same vehicle from Jan. '96 there are two type of differential mount bush, One is internal pipe and washer were not unified and other is unified as shown in the illustration. When installing unified one, a washer (dealt by Nissan 55482-60U1A, two units) is required, please purchase separately.

### Repair Parts (Bush) (need pressure fitting)

No.	Part	Part no.	Code	Price with tax	Price	Qty per car	Part information
16	Rear Suspension Mount Bush, Front	55440-RS520	E	5,250	5,000	2	For 55400-RS590
17	Rear Suspension Mount Bush, Rear	55442-RS520	E	5,250	5,000	2	
18	Diff Mount Bush, Rear	55470-RS580	E	9,450	9,000	2	For 55401-RS590; use as set; Not needed pressure fitting for no.20,21
19	Diff Mount Bush	55476-RS580	E	1,365	1,300	2	
20	Diff Mount Stopper Bush, Upper	55474-RS580	E	840	800	2	
21	Diff Mount Stopper Bush, Lower	55475-RS580	E	630	600	2	



Parts no. 11 and 15 in illustration does not need on HICAS-equipped vehicles



⑦Rear A Arm



Suspension Link  
(for S14)

### Product Note

- Always replace both left and right link and Bush at the same time. If only one side is replaced, the left-right balance of the suspension is lost, so even when repairing the vehicle replace both sides.
- When replacing the rear link, rear axle-side bush (no. 14 and 15) and suspension mount Bush (no. 16 and 17) should all be replaced with NISMO units at the same time. Replacing only the link will not draw out the full performance potential of the suspension.