

Skyline (R34) 2WD / Suspension Link & Bush

Suspension Link

No.	Part	Part no.	Code	Price with tax	Price	Qty per car	Part information
3	Tension Rod Set	54460-RSR40	E	27,300	26,000	1	Left/right, one set *1
5	Transverse Link Set	54555-RSR40	E	30,450	29,000	1	Left/right, one set
7	Rear A Arm Set (standard)	55550-RS590	E	31,500	30,000	1	Left/right, one set *2
7	Rear A Arm Set (reinforced)	55550-RS591	E	36,750	35,000	1	Left/right, one set *2 with reinforced plate
9	Rear Upper Link Set, Front	55125-RS580	E	12,600	12,000	1	Left/right, one set
11	Rear Upper Link Set Pro., Rear	55135-RRR45	E	35,700	34,000	1	Left/right, effective length extended *3
11	Rear Upper Link Set, Rear	55135-RS590	E	16,590	15,800	1	Left/right, one set
13	Rear Lower Link Set	55100-RS590	E	15,750	15,000	1	Left/right; not required for HICAS-equipped vehicles

* Shape and materials are the same as for standard parts. NISMO reinforced Bush have been inserted. Color: silver with NISMO logo sticker.

*1 The standard brake air guide can not be installed, because of the Tension Rod set (no.3) has no bracket for the installation. When installing, the clips (Genuine Nissan part 41184-24U00, four units) are required. Please purchase separately.

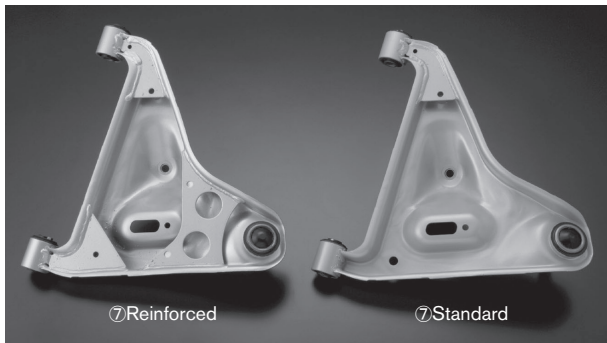
*2 The A arm set does not come with a collar; please use the existing standard collar for installation.

*3 Installation is possible in only HICAS-equipped vehicles. When car is to be used on public roads, an application for modification is required (in Japan; local laws may vary). Clearance of tires, fenders, etc. will change after installation.

Repair parts (Bush) (need pressure fitting / Applicable to genuine link)

No.	Part	Part no.	Code	Price with tax	Price	Qty per car	Part information
4	Tension Rod Bush	54476-RS590	E	3,150	3,000	2	For 54460-RSR40
6	Transverse Link Bush	54560-RS590	E	3,150	3,000	2	For 54555-RSR40
8	Rear A Arm Bush	55045-RS590	E	2,100	2,000	4	For 55550-RS590
10	Rear Upper Link Bush	55157-RS580	E	1,890	1,800	2	For 55125-RS580
12	Rear Upper Link Bush	55157-RS580	E	1,890	1,800	2	For 55135-RS590
14	Rear Lower Link Bush	55157-RS590	E	1,890	1,800	2	For 55100-RS590

* No. 10, 12 are common.



⑦Rear A Arm

Skyline (R34) 2WD / Suspension Link & Bush

Reinforced Bush

No.	Part	Part no.	Code	Price with tax	Price	Qty per car	Part information
15	Front Third Link Bush	54545-RS590	E	3,150	3,000	4	Need pressure fitting
16	Rear Axle Bush, Upper	55157-RS580	E	1,890	1,800	4	
17	Rear Axle Bush, Rear	55152-RS520	E	1,260	1,200	2	Not required on HICAS-equipped vehicles, need pressure fitting
18	Rear Shock Absorber Bush	56219-RS595	E	4,935	4,700	2	Not required on Non-HICAS vehicles, need pressure fitting
	Rear Suspension Mount Bush Kit	55400-RS590	E	19,950	19,000	1	Kit for one vehicle (no. 19, 20 in illustration)
	Diff Mount Bush Kit	55401-RS590	E	24,150	23,000	1	Kit for one vehicle (no. 21 to 24 in illustration)*
25	Upper Mount Bush, Upper	56217-RS580	E	1,050	1,000	4	Front, rear common
26	Upper Mount Bush, Lower	56218-RS580	E	1,050	1,000	4	

* All part (except No.21 to 24) designs and materials are the same as standard parts hardened rubber. No 15 to 22 in illustration need pressure fitting.

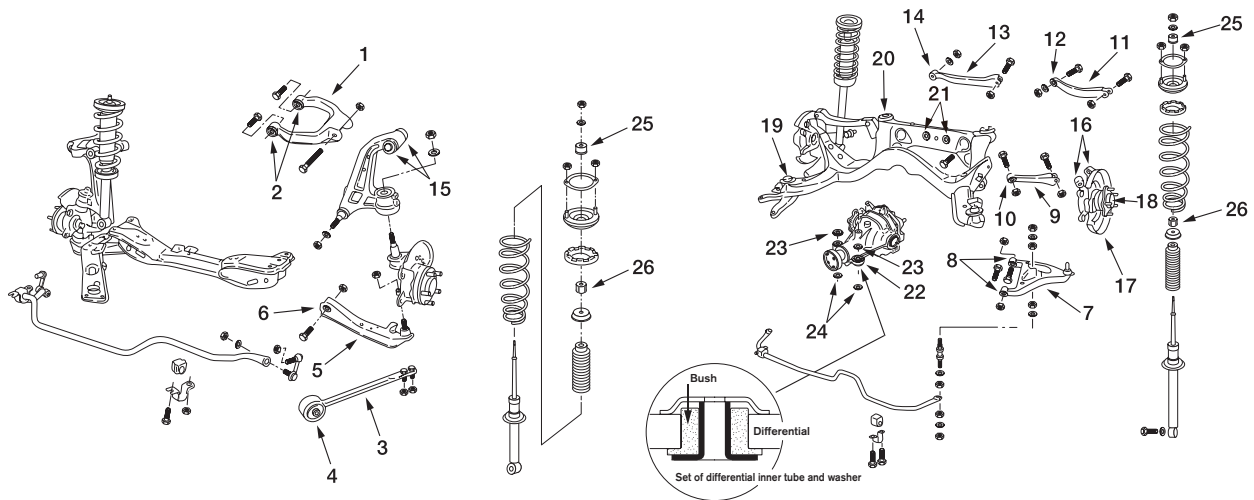
* Standard Diff Mount Bush is internal pipe and washer were unified as shown in the illustration, when insterlling NISMO Diff Mount Bush, a washer (dealt by Nissan 55482-60U10, two units) is required. Please purchase separately.

Repair parts (Bush) (need pressure fitting)

No.	Part	Part no.	Code	Price with tax	Price	Qty per car	Part information
19	Rear Suspension Mount Bush, Front	55440-RS520	E	5,250	5,000	2	For 55400-RS590
20	Rear Suspension Mount Bush, Rear	55442-RS520	E	5,250	5,000	2	
21	Diff Mount Bush, Rear	55470-RS580	E	9,450	9,000	2	For 55401-RS590; use as set; not needed pressure fitting for no. 23, 24
22	Diff Mount Bush	55476-RS580	E	1,365	1,300	2	
23	Diff Mount Stopper Bush, Upper	55474-RS580	E	840	800	2	
24	Diff Mount Stopper Bush, Lower	55475-RS580	E	630	600	2	

Product Note

- Always replace both left and right link and Bush at the same time. If only one side is replaced, the left-right balance of the suspension is lost, so even when repairing the vehicle replace both sides.
- When replacing the rear link, rear axle-side Bush (in the illustration no. 16 and 17) and suspension mount Bush (in the illustration no. 19 and 20) should all be replaced with NISMO units at the same time. Replacing only the link will not draw out the full performance potential of the suspension.



- Collar is not included with A arm
- No. in the illustration 13 and 17 are not required on HICAS-equipped vehicles
- No. in the illustration 18 is not required on non-HICAS vehicles