

# Skyline GT-R (BNR34) / Suspension Link & Bush

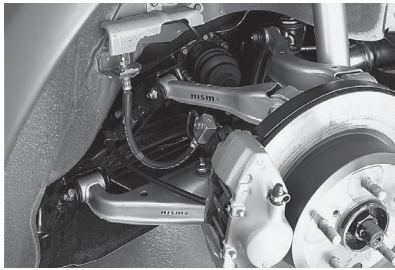
## Suspension Link

No.	Part	Part no.	Code	Price with tax	Price	Qty per car	Part information
5	Rear A Arm Set (standard)	55550-RS590	E	31,500	30,000	1	Left/right, one set; same shape and materials as standard parts.
5	Rear A Arm Set (reinforced)	55550-RS591	E	36,750	35,000	1	
7	Rear Upper Link Set, Front	55125-RS580	E	11,550	11,000	1	
9	Rear Upper Link Set, Rear	55135-RS590	E	16,590	15,800	1	

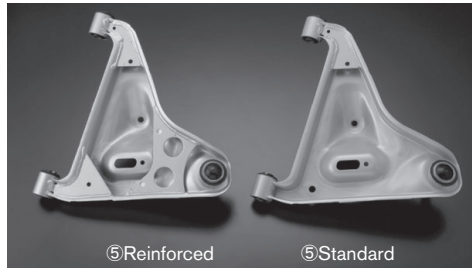
\* The A arm set does not come with a collar; please use the existing standard collar for installation.

### Repair parts (Bush) (pressure fitting required, use of Genuine link possible)

No.	Part	Part no.	Code	Price with tax	Price	Qty per car	Part information
6	Rear A Arm Bush	55045-RS590	E	2,100	2,000	4	For 55550-RS590
8, 10	Rear Upper Link Bush	55157-RS580	E	1,890	1,800	2	For 55125-RS580,55135-RS590



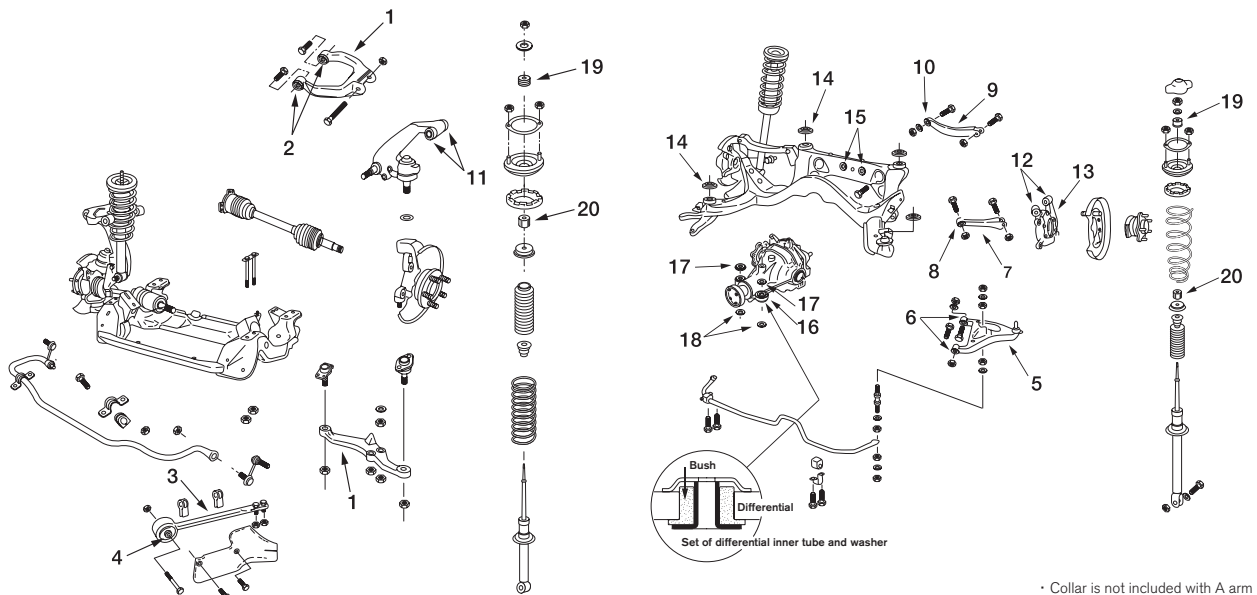
Suspension Link



Reinforced

Standard

Rear A Arm



· Collar is not included with A arm

# Skyline GT-R (BNR34) / Suspension Link & Bush

## Reinforced Bush

No.	Part	Part no.	Code	Price with tax	Price	Qty per car	Part information
11	Front Third Link Bush	54545-RS590	E	3,150	3,000	4	Need pressure fitting
12	Rear Axle Bush, Upper	55157-RS580	E	1,890	1,800	4	
13	Rear Shock Absorber Bush	56219-RS595	E	4,935	4,700	2	
14	Rear Suspension Mount Bush	55442-RS580	E	5,250	5,000	4	
	Diff Mount Bush Kit	55401-RS590	E	24,150	23,000	1	Kit for one vehicle (no. 15 to 18 in illustration)*
19	Upper Mount Bush, Upper	56217-RS580	E	1,050	1,000	4	Front, rear common
20	Upper Mount Bush, Lower	56218-RS580	E	1,050	1,000	4	

\* All part (except No.15 to 18) designs and materials are the same as standard parts hardened rubber. No 11 to16 in illustration need pressure fitting.

\* Standard Diff Mount Bush is internal pipe and washer were unified as shown in the illustration, when interstling NISMO Diff Mount Bush, a washer (dealt by Nissan 55482-60U10, two units) is required. Please purchase separately.

## Repair Parts (Bush) (Needs pressure fitting)

No.	Part	Part no.	Code	Price with tax	Price	Qty per car	Part information
15	Diff Mount Bush, Rear	55470-RS580	E	9,450	9,000	2	For 55401-RS590; use as set; not needed pressure fitting for no. 17, 18
16	Diff Mount Bush	55476-RS580	E	1,365	1,300	2	
17	Diff Mount Stopper Bush, Upper	55474-RS580	E	840	800	2	
18	Diff Mount Stopper Bush, Lower	55475-RS580	E	630	600	2	

## Product Note

- Always replace both left and right link and Bush at the same time. If only one side is replaced, the left-right balance of the suspension is lost; even when repairing the vehicle replace both sides.
- When replacing the rear link, rear axle-side Bush (no. 12 and 13) and suspension mount Bush (no. 14) it is recommended to replace with NISMO units at the same time. Replacing only the link will not draw out the full performance potential of the suspension.

