

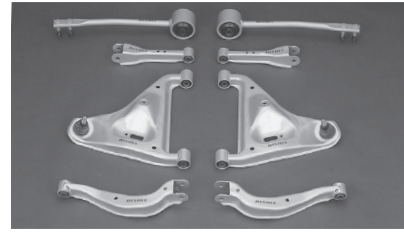
Skyline GT-R (BCNR33) / Suspension Link & Bush

Suspension Link

No.	Part	Part no.	Code	Price with tax	Price	Qty per car	Part information
3	Tension Rod Set	54460-RS580	E	26,250	25,000	1	Left/right, one set; same shape (except tension rod set) and materials as standard parts.
5	Rear A Arm Set (standard)	55550-RS590	E	31,500	30,000	1	
	Rear A Arm Set (reinforced)	55550-RS591	E	36,750	35,000	1	
7	Rear Upper Link Set, Front	55125-RS580	E	11,550	11,000	1	
9	Rear Upper Link Set, Rear	55135-RS590	E	16,590	15,800	1	

• The A arm set does not come with a collar; please use the existing standard collar for installation.

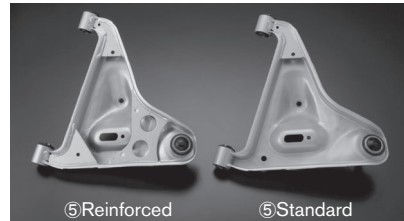
• The standard brake air guide can not be installed. Because of the tension rod set (No.3) has no bracket for the installation. when installing, the clips (Genuine Nissan part 41184-24U00, four units) are required. Please purchase separately.



Suspension Link

Repair parts (Bush) (need pressure fitting / applicable to genuine link)

No.	Part	Part no.	Code	Price with tax	Price	Qty per car	Part information
4	Tension Rod Bush	54476-RS580	E	6,300	6,000	2	For 54460-RS580
6	Rear A Arm Bush	55045-RS590	E	2,100	2,000	4	For 55550-RS590
8	Rear Upper Link Bush	55157-RS580	E	1,890	1,800	2	For 55125-RS580
10	Rear Upper Link Bush	55157-RS580	E	1,890	1,800	2	For 55135-RS590



⑤ Reinforced

⑤ Standard

⑤ Rear A Arm

Reinforced Bush

No.	Part	Part no.	Code	Price with tax	Price	Qty per car	Part information
11	Front Third Link Bush	54545-RS590	E	3,150	3,000	4	Need pressure fitting
12	Rear Axle Bush, Upper	55157-RS580	E	1,890	1,800	4	
13	Rear Shock Absorber Bush	56219-RS595	E	4,935	4,700	2	
14	Rear Suspension Mount Bush	55442-RS580	E	5,775	5,500	4	
	Diff Mount Bush Kit	55401-RS590	E	24,150	23,000	1	Kit for one vehicle (no. 15 to 18 in illustration)*
19	Upper Mount Bush, Upper	56217-RS580	E	1,050	1,000	4	Front, rear common
20	Upper Mount Bush, Lower	56218-RS580	E	1,050	1,000	4	

• All part (except No.15 to 18) designs and materials are the same as standard parts hardened rubber. No 11 to 16 in illustration need pressure fitting.

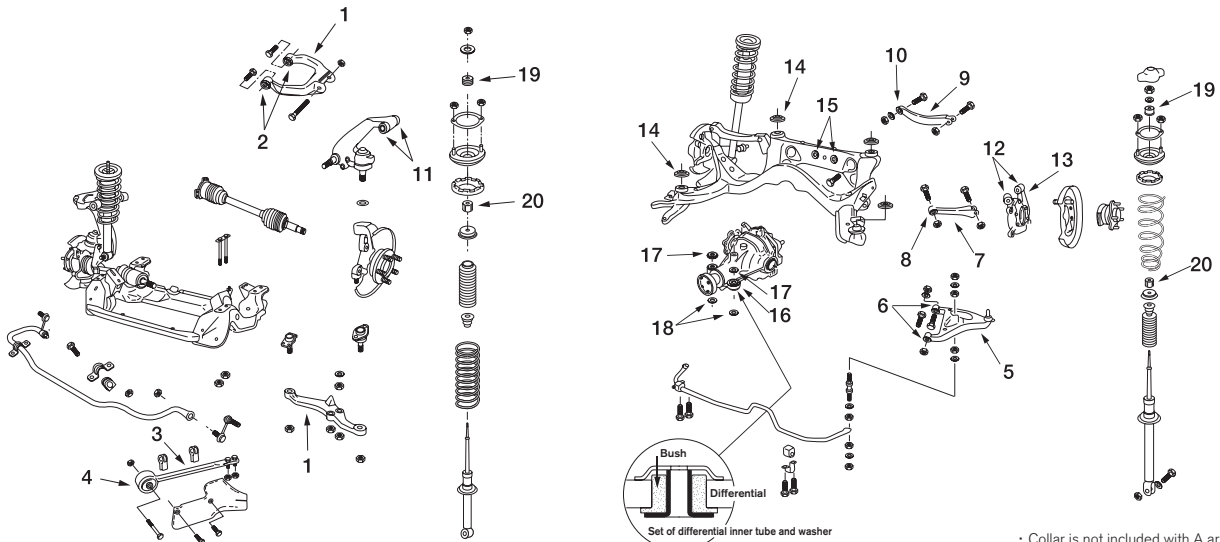
* Same vehicle from Jan. '96 there are two type of differential mount bush, One is internal pipe and washer were not unified (Genuine Nissan part 55476-70T00) and other is unified (Genuine Nissan part 55476-70T20) as shown in the illustration. When installing unified one, a washer (dealt by Nissan 55482-60U1A, two units) is required, please purchase separately.

Repair parts (Bush) (need pressure fitting)

No.	Part	Part no.	Code	Price with tax	Price	Qty per car	Part information
15	Diff Mount Bush, Rear	55470-RS580	E	9,450	9,000	2	For 55401-RS590; use as set; not needed pressure fitting for no. 17, 18
16	Diff Mount Bush	55476-RS580	E	1,365	1,300	2	
17	Diff Mount Stopper Bush, Upper	55474-RS580	E	840	800	2	
18	Diff Mount Stopper Bush, Lower	55475-RS580	E	630	600	2	

Product Note

- Always replace both left and right link and bushings at the same time. If only one side is replaced, the left-right balance of the suspension is lost, so even when repairing the vehicle replace both sides.
- When replacing the rear link, rear axle-side Bush (no. 12 and 13) and suspension mount Bush (no. 14) should all be replaced with NISMO units at the same time. Replacing only the link will not draw out the full performance potential of the suspension.



• Collar is not included with A arm