

# Metal

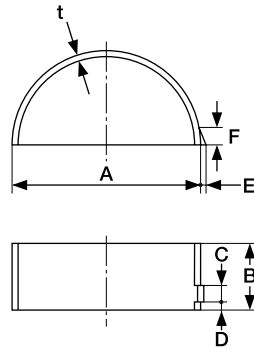
## L Series, 4-Cylinder (L16, L18); L-Series, 6-Cylinder

Part	Part no.	Code	Price with tax	Price	Qty per car	Part information	
						Bearing thickness	F112
Con Rod Metal	12111-22010	B	1,155	1,100	8 or 12	1.478~1.491	
	12111-22011					1.488~1.501	
	12111-22012					1.498~1.511	
Main Bearing Outer	12216-22010	B	1,155	1,100	4	1.812~1.825	
	12216-22011					1.817~1.830	
	12216-22012					1.827~1.840	
Main Bearing Inner	12231-22010	B	1,155	1,100	4 or 8	1.807~1.820	
	12231-22011					1.817~1.830	
	12231-22012					1.827~1.840	
Main Bearing Center	12247-22010	B	1,785	1,700	2	1.807~1.820	
	12247-22011					1.817~1.830	
	12247-22012					1.827~1.840	

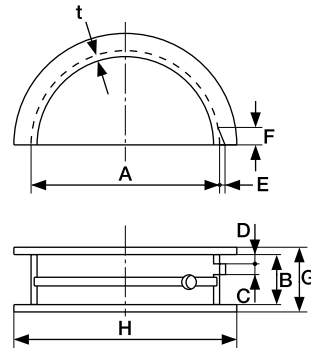
### Metal specification

Compatible engine	Position	Part no.	A	B	C	D	E	F	G	H	t	Material	Part information
L type	Connecting rod	12111-22010~2	53.01	22.0	4.6	0	1.4	5.6	—	—	approx.1.5	F112	With ø2.5 splash hole
	Main outer	12216-22010~2	58.66	26.0	4.6	3.1	1.4	5.6	—	—	approx.1.83		
	Main inner	12231-22010~2	58.66	23.0	4.6	2.6	1.4	5.6	—	—			
	Main center	12247-22010~2	58.66	28.0	4.6	4.1	1.4	5.6	31.9	74.5			

Connecting rod bearing



Main bearing



Main bearing

